

REPUBLIC OF RWANDA



MINISTRY IN CHARGE OF EMERGENCY MANAGEMENT

Jya Mbere Project/Socio-Economic Inclusion of Refugees and Host Communities Project
(SEIRHCP)

Annual progress report
July 1, 2020- June 30, 2021

September 30, 2021

Table of Contents

List of Tables	3
List of figures.....	4
Acronyms	5
I. Executive Summary of the implementation period of FY20-21	6
II. Update on the Implementation of Strategic Plan for Refugee Inclusion 2019-2024.....	13
III. Implementation Progress by Component.....	14
Component One: Access to Basic services and Socio-economic Investments	14
Sub-component 1(a): Access to basic services	15
Sub-component 1(b): Socio-economic Investments	30
Component Two: Economic Opportunity	32
Subcomponent 2(a): Access to finance	32
Subcomponent 2(b): Capacity building for access to finance	32
Component Three: Environmental Management	34
Component Four: Project Management/M&E	35
Staffing	35
Monitoring and Evaluation (M&E).....	36
Compliance with Safeguards Policies	37
Stakeholder Engagement.....	40
Technical Team (TT) & Project Steering Committee (PSC) Meetings.....	41
Grievance Redress Mechanism.....	42
Strategic communications for raising awareness on refugees right to work.....	44
Capacity building.....	44
Financial Management and Disbursements	45
Additional Financing (AF) and Restructuring of the Project	45
Procurement implementation progress	47
V. Agreed Actions from the 2 nd Implementation Support Mission (October 5-9, 2020).....	51
IV. Key Challenges and way forward.....	52
V. Planned Activities for the next implementation period	52
Annex 1. Summary of stakeholder Engagement Activities.....	54
Annex 2: Summary of progress against the results framework	57

List of Tables

Table 1: Updates on implementation progress of SPRI	13
Table 2: Status of component one subprojects	14
Table 3: Cumulative labor days for construction of 40 classrooms in Gisagara District	15
Table 4: Progress of construction works for 40 classrooms in Gisagara District.....	16
Table 5: Number of casual labourers per site for classrooms under construction in Gisagara District.....	16
Table 6: Summary of progress for ongoing Implementation for classrooms construction	20
Table 7: Desks supplied to existing schools in Gatsibo District and constructed classrooms in Gisagara district	22
Table 8: Number of students using supplied desks on existing schools in Gatsibo	22
Table 9: Number of casual workers for supply of desks at existing classrooms in Gatsibo District	22
Table 10. Proposed trades	23
Table 11: Implementation progress of feasibility studies for construction/upgrade of TVETs	24
Table 12: Number of equipment lots supplied to the Ngarama Health Center	25
Table 13: Number of casual workers for supply of MUGOMBWA TVET equipment in Gisagara District.	29
Table 14: Implementation progress of health center subprojects as of June 2021	29
Table 15: Implementation progress of water supply system as of June 2021	30
Table 16: Implementation progress markets subproject as of June 30, 2021	31
Table 17: Progress for access to finance as of June 30, 2020	32
Table 18: Progress of activities for Needs Assessment of beneficiaries of component two	33
Table 19: Progress of activities to support implementation of component two	33
Table 20: Progress for rehabilitation of ravines and construction of surface or ground water reservoirs.....	35
Table 21. Baseline survey implementation status	36
Table 22: P-MIS development implementation status	36
Table 23. SEP activities implementation update	40
Table 24. GRM implementation update	42
Table 25: Summary of Disbursement received	45
Table 26: Challenges and way forward	52
Table 27: Planned activities for next implementation period.....	52

List of figures

Figure 1: Location of Refugee camps and Refugee Statistics, as of May 31,2021	6
Figure 2: sample of photos for classrooms and toilets constructed in Gisagara District	17
Figure 3: Desks supplied in different schools in Gatsibo District	22
Figure 4: Surgical lamp and Lab Fridge supplied at Ngarama HC	25
Figure 5: Radiant warmer and Autoclave supplied at Ngarama HC	26
Figure 6: Mattresses supplied at Ngarama HC.....	26
Figure 7: Equipment supplied to equip Mugombwa TVET	28
Figure 8: Temperature and address recording as well as hand washing stations with fences before accessing the site	40
Figure 9: Illustration of site visit meeting with workers at GS Mugombwa	40

Acronyms

BoQ:	Bills of Quantity
COVID 19:	Corona Virus Disease 19
DIA:	District Implementation Agreement
ESMP:	Environmental and Social Management Plan
MINALOC:	Ministry of Local Government
MINECOFIN:	Ministry of Finance and Economic Planning
MINEDUC:	Ministry of Education
MINEMA:	Ministry in Charge of Emergency Management
MINICOM:	Ministry of Trade and Industry
MININFRA:	Ministry of Infrastructure
MoE:	Ministry of Environment
MoH:	Ministry of Health
PDO:	Project Development Objectives
PIM:	Project Implementation Manual
RAP:	Resettlement Action Plan
RP:	Rwanda Polytechnic
RTDA:	Rwanda Transport Development Agency
SEIRHCP:	Social Economic Inclusion of Refugee and Host Community Project
SPIU:	Single Project Implementation Unit
ToRs:	Terms of References
TT:	Technical Team
TVET:	Technical and Vocational Education and Training
UNHCR:	United Nation High Commission of Refugees
WASAC:	Water and Sanitation Corporation
WDA:	Workforce Development Agency

I. Executive Summary of the implementation period of FY20-21

The Socio-Economic Inclusion of Refugees and Host Communities (JYA MBERE PROJECT) seeks to consolidate the ongoing shift in the way refugee affairs are managed in Rwanda from a humanitarian to a long-term, government-led developmental response that includes host communities. In line with the Comprehensive Refugee Response Framework (CRRF) and the Government of Rwanda’s *Strategic Plan for Refugee Inclusion 2019-2024*, the project development objective is to “improve access to basic services and economic opportunities for refugees and host communities, and support environmental management, in the target areas in Rwanda.” The project aims to mitigate the negative impacts of refugees on the environment and in terms of access to and quality of services, while maximizing livelihood and employment opportunities for refugees and host communities to grow the local economy and build self-reliance. The project also looks to address gender concerns and strengthen social relations between refugees and host communities.

The Ministry in charge of Emergency Management (MINEMA) coordinates the implementation of the Project, which is implemented in the six districts hosting refugee camps, namely Gatsibo, Gicumbi, Gisagara, Karongi, Kirehe and Nyamagabe Districts hosting respectively Nyabiheke, Gihembe, Mugombwa, Kiziba, Mahama and Kigeme camps.

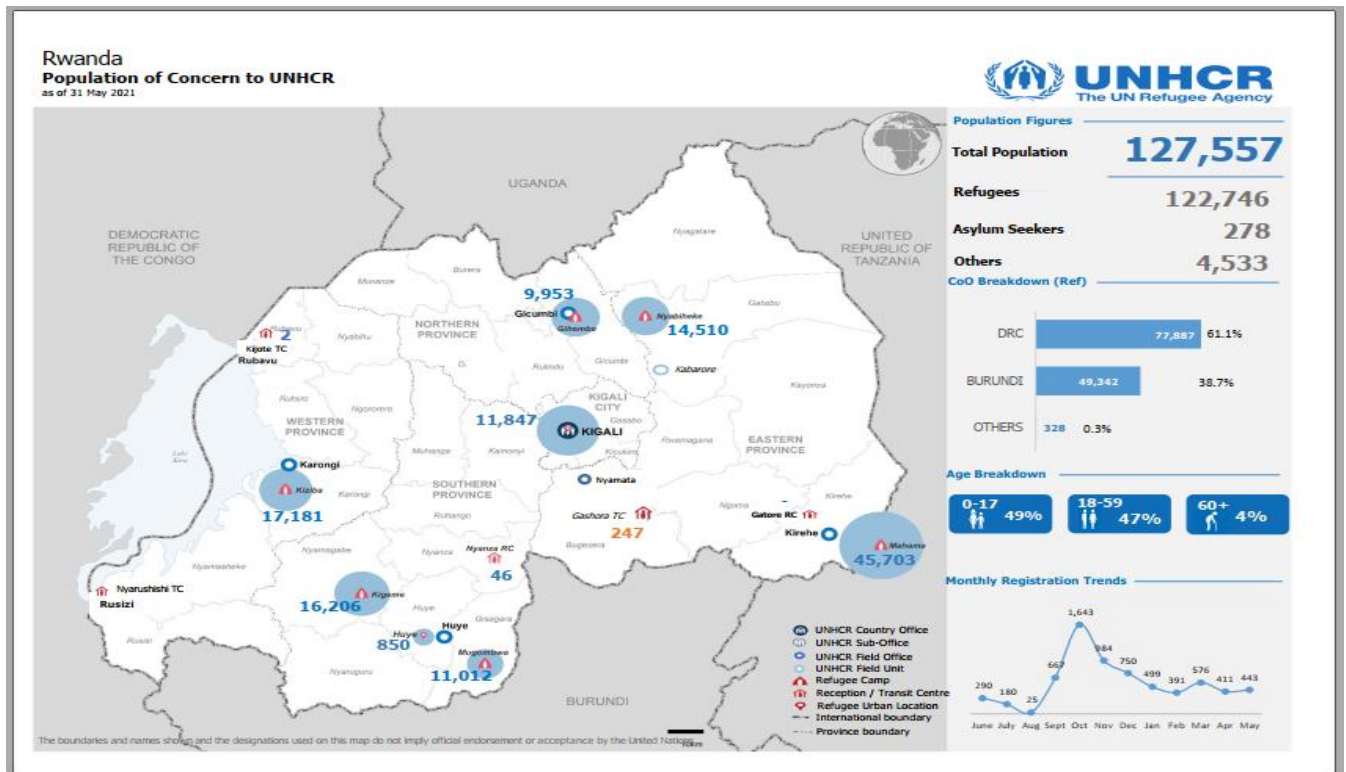


Figure 1: Location of Refugee camps and Refugee Statistics, as of May 31, 2021

The original project financing was USD 60 million from the International Development Association (IDA), including USD 50 million from the IDA18 sub-window for refugees and host

communities (RSW). The effectiveness date is 14th August 2019 and closing date is 31st October 2024. In June 2021, the World Bank approved an Additional Financing grant of USD 20 million to respond to COVID-19 impacts. Of this amount, USD 18 million is from the IDA 19 Window for Host Communities and Refugees (WHR). The closing date for the Additional Financing is October 30, 2026.

The project has four (4) components:

- Component 1: Access to Basic Services and Socio-economic investments (implemented by the six participating Districts, supported by MINEMA. As of June 2021, the two roads subprojects are implemented by the Rwanda Transport Development Agency)
- Component 2: Economic Opportunity (implemented by the Development Bank of Rwanda (BRD))
- Component 3: Environmental Management (implemented by MINEMA)
- Component 4: Project Management/M&E (implemented by MINEMA)

This annual progress report covers the implementation period from July 21, 2020 to June 30, 2021. It presents progress by component and key challenges as well as activities for the next Quarter implementation period.

❖ **Component one: Access to basic services and socio-economic investments**

Classrooms construction

During this reporting period, 250 classrooms were targeted to be constructed. The tenders for execution of construction works were completed and was under contract drafting for 73 classrooms to be constructed in Nyamagabe. The contract for execution of construction works was signed on 28, June, 2021 for 70 classrooms in Kirehe; was under contract drafting for 55 classrooms construction in Gatsibo. The feasibility study report has been approved for 12 classrooms to be constructed in Gicumbi and 40 classrooms have been constructed and equipped in Gisagara District.

Technical and Vocational Education and Training (TVET) schools construction/upgrade.

For TVETs to be constructed/upgraded, the final feasibility study report is under final stage for a TVET to be constructed in Nyamagabe district, under contract drafting for the execution works for TVET to be upgraded in Gatsibo district, ongoing feasibility study for TVET to be constructed in Gicumbi and the final feasibility study report is under preparation for the TVET to be constructed in Karongi district. The feasibility study report for TVET to be constructed in Kirehe has been reviewed and it is under the approval process.

Equipment for Existing classrooms

- 920 pupil's desks, 40 chairs of teachers and 40 table for teachers to equip the constructed 40 classrooms in Gisagara Districts were supplied to EP Nyabitare, EP Linda, and GS Mugombwa schools.
- 6,730 desks to equip existing classrooms in Gatsibo District were totally supplied for 26 existing Schools, of which 688 desks were supplied in 2019/2020 year and 6,042 remaining desks were supplied in 2020/2021 and are in use.

Equipment for Ngarama Health center

During this reporting period, all nine (9) lots were totally supplied. Supplied equipment include (i) Maternity and neonatal equipment(Delivery bed, radiant warmer, oxymeter, Ambu bags for Children, Electric vacuum, Foeto cardiocograph); (ii) Medical kits(Delivery Kit / Episiotomy, Dental Kit and Kit spéculum vaginal); (iii) Medical furniture(Examination tables, Standing exam light, Stretcher Drug dispensary trolley, Matresses, Patient bed, Bedside cabinets and Wheel Chairs); (iv) Lab Equipment(Electric Centrefuge/rotator, Microscope binoculaire mixte, Lab Chairs for lab technician, Water distiller); (v) Sterilization machine; (vi) Laundry machines (Washer extractor, Dryer, Ironer and Consumables); (vii) Linen (Medical bed sheets pairs and Gowns) ; (viii)(general medical equipment(Otosopes, Stethoscopes, Portable pulse oximeters for Adult, Glucometers, Digital Thermometers, Chronometer, Scale for Adult and children, Oxygen concentrator, Bed Pan and Lab fridge) ;and (ix) Office furniture(Office Chairs, metallic and non-metallic office cupboards, Chairs for patients /Benches and Office Tables); All supplied equipment is being used by the concerned beneficiaries.

The health center got incredible increase in number of equipment that improve health service delivery. Instances are increase from four (4) to 40 beds, Foeto cardiocographes to facilitate in monitoring women on labor at a distance, laundry and sterilization machines that fasten to get clean and sterile equipment and reduced risks of infections to cleaners who used to wash by hands where sometimes they came into contact with blood while washing, etc.

One existing TVET equipped with necessary materials in districts hosting refugee camps

One existing TVET has been supplied by required material. The supply of equipment to equip Mugombwa TVET in Gisagara district has been completed as planned in this reporting period. Among the equipment supplied in this TVET includes tailoring machines; office furniture including chairs and tables, electrification and masonry workshops equipment.

Health centres constructed and updated in Nyamagabe (1) and Gicumbi (1) District

Ongoing preparation of the final feasibility study for Nyamagabe Health center. The final feasibility study report for Gicumbi Health Center was under review and the project has been commissioned by the district.

District Hospital upgraded in Kirehe District

Ongoing feasibility study report preparation for upgrading Kirehe district hospital. The first draft feasibility study report has reviewed and the consultant is addressing the comments.

Water supply system extended and rehabilitated in Karongi, Gatsibo and Nyamagabe Districts

Till the end of the fiscal year there is ongoing preparation of Environmental and Social Audit ESA for the water supply system in Karongi district by an individual consultant.

Tender for hiring the contractor for execution works and supervision works has been published for the water supply system in Gatsibo district and the tender for the contractor is under evaluation stage. The shortlisting phase for supervision of works has been completed and RFP has been issued to the shortlisted firms.

Till the end of this fiscal year, the consultancy contract for developing the ESA report has been initiated, and it is under preparation of inception report.

Market upgrading in Gatsibo and Gisagara districts, market construction in Nyamagabe district, and selling point construction in Gicumbi district.

- For Nyamagabe, the feasibility study report is under final preparation by the consultancy firm. The report has been reviewed by the team and comments are being addressed by the consultancy firm;
- Gicumbi; there is ongoing preparation of draft feasibility study report.
- For Gatsibo, the feasibility study has been completed and there is ongoing preparation of tender documents and terms of references for hiring the supervision firms.
- For Gisagara, there is ongoing preparation of final feasibility study report by the consultancy firm.

Roads upgrade and extension

Roads will be upgraded and extended in Karongi and Kirehe Districts with 110 km (43 and 67 Km respectively) to connect host communities and refugees to employment possibilities. The contract for the consultancy firm to conduct the feasibility study has been signed. At the end of the reporting period, the consultancy firm for conducting feasibility study and preparing Environmental and Social Impact assessment (ESIA) and Resettlement Action Plan (RAP) have been hired and the contract signed on 6th May 2021. The inception report has been validated and approved on 28th June 2021, the firm is preparing the interim feasibility study report.

❖ Component Two: Economic Opportunity

Banque Populaire du Rwanda (BPR), Atlas Mara, African Entrepreneur Collective (AEC) RT Ltd., Umutanguha Microfinance Ltd., Kenya Commercial Bank (KCB) and Bank of Kigali (BK) have

signed subsidiary financing agreements with BRD to become participating financial institutions (PFIs) under Component Two. AEC has a pipeline of more than 300 proposals. Furthermore, the firm to conduct the capacity needs assessment for stakeholders through the financing value chain was hired during this reporting period and final needs assessment report is under review.

❖ **Component Three: Environmental Management**

28 ravines have been identified by the assessment done jointly in year one of implementation by MINEMA, target districts, former Rwanda Water and Forestry Authority (RWFA) and World Bank. The ravines identified have been subjected to the feasibility study and preparation of ESIA and RAP. The contract for conducting the feasibility study was signed and initiated on April 27 2021 for 6 months duration. The inception report has been submitted for review by the technical team and the next quarter targets are submission of the draft feasibility study report and draft ESIA and RAP.

❖ **Component Four: Project Management, Monitoring and Evaluation.**

Staffing. All project staff were recruited and are on board with an exception of two positions of Civil Engineers that were put on hold to wait for the process of restructuring to transfer the implementation responsibility of the road subprojects to the RTDA. The RTDA will identify and select technical staff for the project as necessary.

Baseline survey: the draft report for the baseline survey has been submitted by the consultancy firm for review. The final baseline survey report will be submitted by end of Quarter one 2021-2022.

Project Management Information System (P-MIS): P-MIS will support monitoring of project activities. The P-MIS has been fully developed and deployed and its users have been trained. Data entry to make the system fully operational is ongoing.

Compliance with safeguards: Safeguards screening reports were approved by the World Bank and recommended instruments are under preparation for health facility, water supply system and markets construction/upgrade as well as roads upgrade and ravines rehabilitation. For TVET to be constructed in Kirehe District, ESIA has been cleared by the World Bank whereas for classrooms to be constructed, ESIA's have been cleared by the World Bank subject to minor comments including submission of RDB certificate.

For classrooms constructed in Gisagara district, regular monthly site visits for monitoring were hindered by the lockdown in Kigali that was followed by movement restrictions in the particular district and then between districts due to COVID-19. For classrooms construction

activities in Gisagara, mitigation measures for environmental and social impacts are being implemented including COVID-19 preventions. The latter resulted in reduction of workers at 30 % on construction sites.

In regards to fulfilling requirements for additional financing and project restructuring, the ESMF was updated, cleared by the WB and then published on MINEMA website on May 22, 2021.

Stakeholder Engagement. Meetings were mostly held virtually. Two (2) Project Steering Committee (PSC), two (2) Technical Team (TT), and coordination meetings were held and the latter included meetings with BRD, Districts Field Specialists and contractors.

Grievance Redress Mechanism (GRM). Grievance Redress Committees were established and trained in Gisagara district. Grievances were reported in person, meetings, via reports, site visit meeting and received via telephone messages (WhatsApp group for monitoring classrooms constructions in Gisagara). 14 out of 19 reported complaints related to ongoing construction activities in Gisagara were addressed. Pending complaints will be addressed under operation and maintenance period by the District.

Strategic Communication Strategy on Refugees Right to Work. The campaign has been put on hold due to COVID-19 prevention measures. However, project success stories documentary and component two awareness videos were produced in March to be aired on TV and radio. MINEMA and BRD have been undertaking planning meetings to generate ideas for communications and outreach activities in the COVID context.

Capacity building. P-MIS users were trained virtually, whereas trainings for established GRCs were put on hold due to COVID-19 preventive measures prohibiting face to face meetings. MINEMA staff also participated in three learning events under the World Bank-supported Regional Dialogue on Forced Displacement in the Great Lakes Region program, sharing experience with counterparts from Burundi, the Democratic Republic of Congo, Tanzania, Uganda and Zambia.

Financial Management. The disbursement rate of the project is at 14,07 %. During this reporting period, the project received a disbursement of US\$8,880,037.29 of which US\$6,959,202.29 is from the credit portion, and US\$1,920,805 is from the grant portion.

Additional Financing (AF) and Project Restructuring

During this reporting period, the team finalized a proposal for the AF to respond to the impact of COVID-19 and the Project Restructuring to bring the Rwanda Transport Development Agency (RTDA) in as an implementing agency to the project to take on the implementation responsibility of the two road subprojects in Kirehe and Karongi Districts. The project team

prepared a proposal for AF and Restructuring and initiated the preparation of a Strategy Note which is a requirement for accessing the IDA19 Window for Host Communities and Refugees (WHR). The proposal for the AF was for US\$20 million. The Restructuring request was to bring in the RTDA for the roads and to extend the closing date of the project for two years from October 2024 to October 2026 to allow for the implementation of road subprojects based on the design-build-maintain model. The proposal was approved by the World Bank Board in late June 2021.

Under the Strategy Note, the government of Rwanda reaffirmed its commitment to the social and economic inclusion of refugees. Specific commitments made in the Strategy Note include the following:

The education pledge commits to:

- (i) Improve the quality of education by upgrading school infrastructure in refugee hosting districts, equipping them and allocating scholastic materials to accommodate refugees and the host community.
- (ii) Expand technical and vocational education and training to benefit 30 percent of refugees and host communities by constructing or upgrading Technical and Vocational Training Education (TVET) infrastructure in refugee hosting districts, equipping them, and allocating scholastic materials.

The jobs and livelihoods pledge commit to:

- i) Promote joint agriculture projects between refugees and host community households to create jobs, increase agricultural production paving a way to self-reliance.
- ii) Expand tea plantations and improve necessary infrastructure that increases job opportunities for refugees and host communities; at least 30 percent of new job opportunities will target refugees.
- iii) Promote refugee youth empowerment through YouthConnekt or other initiatives aiming at socio economic transformation of youth. 100 percent of refugee youth, who meet the competitive criteria for Youth Connekt, will have access to this national innovative business-enterprise initiative and the best business ideas will be awarded based on available resources.

The energy, infrastructure and environment pledge commit to:

- i) Undertake environmental protection and rehabilitation in refugee hosting areas.

- ii) Build resilient refugee settlements that promote conscious land use and reduce adverse impacts on the environment.
- iii) Ensure sustainable use of natural resources by providing clean and renewable energy solutions in refugee and host community households, in order to discourage the use of firewood.

The protection and solutions pledge commit to:

- i) Build an effective and efficient registration documentation system including birth and marriage registration and the recognition of the legal status of displaced persons and their families.

And the health pledge commits to:

- i) Through joint efforts with UNHCR and other partners, necessary resources will be mobilized to include refugees in the national program for viral hepatitis infection treatment to ensure Hepatitis C virus (HCV) elimination by 2024 in Rwanda.

Challenges and Proposed Way Forward

During this reporting period, encountered challenges include: (a) delay in review of safeguards documents; (b) delays in the implementation of some activities due to the reduced number of staff in the office because of COVID-19; (c) consultants for feasibility studies, construction sites and inability to hold face-to-face meetings/trainings/field work due to COVID-19; and (d) failure of tenders due to a lack of qualified bidders. As per the highlighted challenges, the proposed ways forward are: (a) request support to the WB to provide technical assistance to augment the SPIU’s capacity to review safeguards documents, (b) working remotely and resuming activities whenever conditions will allow; (c) extending delivery and implementation periods of contracts; and (d) reviewing requests for proposals and re-advertising failed tenders.

II. Update on the Implementation of Strategic Plan for Refugee Inclusion 2019-2024

During the Leaders’ Summit for Refugees held in New York, on 20th September 2016, the Government of Rwanda made four commitments towards refugees’ inclusion. Below is a table with an update on implementation progress as of the end of the reporting period.

Table 1: Updates on implementation progress of SPRI

Commitment	Updates as of June 2021
------------	-------------------------

1. Public launch of joint MIDIMAR-UNHCR livelihoods strategy, with a focus on graduating camp-based refugees out of assistance programs and increasing formal access to work opportunities;	The reviewed strategy was finalized, launched and is operational. A revised and updated version for 2021-2024 was launched on May 28, 2021.
2. Commitment to ensure that 100% of refugees are in possession of valid refugee identity cards issued by the Government of the Republic of Rwanda (NIDA) by end of 2017;	78,356 refugees need IDs, 61,725 IDs produced, 42,098 IDs distributed (78.7 % of the total number of refugee IDs produced, 68% Refugees above 16 are holding IDs) are in possession of refugee IDs. This target is expected to be met by this year. There are refugees who are turning 16 Years old whom their IDs are being processed gradually.
3. Commitment to ensure that 100% of refugee students in secondary school and 50% in primary schools will be integrated into national education systems by the end of 2018	26,485 (Girls: 12,552 and Boys: 13,933) refugee students are enrolled in the primary schools and 13,762 (girls: 6,307 and boys: 7,567) enrolled in secondary schools. and 100% of refugee students in primary and secondary schools are integrated into national education system.
4. Commitment to ensure that 100% of urban refugees will have the opportunity to buy into the National Health Insurance System (NHIS) by the end of 2017	9,656 urban Refugees and refugee students in boarding schools have been enrolled in CBHI during the reporting period.

III. Implementation Progress by Component

Component One: Access to Basic services and Socio-economic Investments

Component one has two subcomponents: Sub-component 1(a) covers access to basic services and Sub-component 1(b) covers Socio economic investments. Sub-component 1(a) subprojects under implementation during this reporting period were classrooms construction TVET schools' construction/upgrade, equipping existing classrooms, health facilities construction/upgrade and water supply system rehabilitation. Under subcomponent 1(b), there are two road upgrade and construction/upgrade of market/selling points. Below is a table summarizing component one implementation status.

Table 2: Status of component one subprojects

Subproject type	Number approved	Not yet commenced	Under Procurement	Implementation ongoing	Completed
Sub-component 1(a): Access to Services					
Classroom construction/feasibility study	250	0	140	70	40

Subproject type	Number approved	Not yet commenced	Under Procurement	Implementation ongoing	Completed
Classroom equipment (desks per one classroom)	554	85	125	0	344
School latrine construction	386	0	230	108	48
TVET centre construction/upgrade	4	0	4	0	0
TVET center equipment	2	1	0	0	1
Water supply systems	3	0	3	0	0
Health center construction/upgrade	2	2	0	0	0
Health center equipment	1	0	0	0	1
Hospital upgrading	1	1	0	0	0
Sub-component 1(b): Socio-economic investments					
Road upgrading/construction	2	0	0	2 (ongoing feasibility study)	0
Market/selling point construction/upgrade	4	4	0	0	0
TOTAL	1,209	595	443	180	434

The following sections provide details per sub-component and output.

Sub-component 1(a): Access to basic services

Classrooms construction in Gisagara district

In Gisagara, construction works of 40 classrooms and 48 latrines initiated on September 26, 2020 have been completed. The provisional handover has been undertaken on 6th June 2021 and the works are under defect liability period for 12 months.

Construction works took 7 months and generated working opportunities for 1700 casual laborers including 1435 host community members and 282 refugees. Cumulatively, total number of labor days recorded in the execution period was **48 557**.

Table 3: Cumulative labor days for construction of 40 classrooms in Gisagara District

No	School	Number of classrooms (G+1)	Number of toilets	Cumulative labor days recorded
		of		

1	Groupe Scolaire (GS) Mugombwa	20	24	22 082
2	Ecole Primaire (EP) Linda	10	12	13 603
3	EP Nyabitare	10	12	12 872
Total		40	48	48 557

Table 4: Progress of construction works for 40 classrooms in Gisagara District

#	School	Number of classrooms (G+1)	Number of toilets	Target	Progress (%)
1	EP Nyabitare	10	12	100	100
2	EP Linda	10	12	100	100
3	GS Mugombwa	20	24	100	100
Total		40	48	100	100

Table 5: Number of casual labourers per site for classrooms under construction in Gisagara District

No	School	Month	Casual laborers	Progress in number			Progress in %		
				HC	Refugees	females	HC	Refugees	females
1	EP Nyabitare	Oct, 2020	87	87	0	25	100	0.00	29
		Nov, 2020	106	106	0	29	100	0	27
		Dec, 2020	100	100	0	27	100	0	27
		Jan, 2021	67	67	0	20	100.00	0.00	29.85
		Feb, 2021	27	27	0	6	100.00	0.00	22.22
		Mar, 2021	30	30	0	4	100.00	0.00	13.33
		April, 2021	25	25	0	6	100	0	24
2	EP Linda	Oct, 2020	167	165	2	44	99	1	26
		Nov, 2020	80	76	4	27	95	5	34
		Dec, 2020	37	33	4	5	89	11	14
		Jan, 2021	61	55	6	20	90.16	9.84	32.79
		Feb, 2021	42	36	6	10	85.71	14.29	23.81

		Mar, 2021	59	46	13	20	77.97	22.03	33.90
		April, 2021	44	38	6	11	86	14	25
3	GS Mugombwa	Oct, 2020	122	92	30	32	75	25	26
		Nov, 2020	149	115	34	41	77	23	28
		Dec, 2020	187	160	27	28	86	14	15
		Jan, 2021	84	48	36	28	57.14	42.86	33.33
		Feb, 2021	72	41	31	25	56.94	43.06	34.72
		Mar, 2021	72	50	22	22	69.44	30.56	30.56
		April, 2021	82	38	44	25	46	54	30
Subtotal			1700	1435	265	455	84.41	15.59	26.76

Below are pictures illustrating constructed classrooms and toilets

Figure 2: sample of photos for classrooms and toilets constructed in Gisagara District

1	EP NYABITARE	 <p data-bbox="513 1591 808 1623">Block of 10 classrooms</p>
---	--------------	--



Block of 12 latrines

2



EP LINDA



Block of 10 classrooms



Block of 12 latrines constructed

<p>3</p>	<p>GS MUGOMBWA</p>	 <p>2 Blocks of 20 Classrooms</p>
		 <p>2 blocks of 24 latrines</p>

Construction of classrooms in Gatsibo, Gicumbi, Nyamagabe and Kirehe

210 classrooms are planned to be constructed in Gatsibo, Gicumbi, Nyamagabe and Kirehe in order to reduce overcrowding in classrooms and improve education quality for host community members and refugees living there.

Kirehe has hired the contractor for construction works, and contract was signed on June 28, 2021 with immediate commencement of construction works, whereas the remaining districts are under tendering process to hire contractors and supervising firms. The following table provide detailed progress per District.

Table 6: Summary of progress for ongoing Implementation for classrooms construction

#	District	Subproject	Target	Achievement ¹	Challenges	Next quarter target
1	Gatsibo	Construction of 55 classrooms and 60 toilets	<ul style="list-style-type: none"> Construction works initiated 	<p>Feasibility study completed with ESIA approved by the WB subject to minor comments including submission of RDB certificate</p> <p>The tender to hire 3 contractors is at contract drafting level whereas the tender to hire supervision firm is at combined technical and financial proposal level with an appeal at national independent panel</p>	<p>Delay in addressing initial comments from the consultants</p> <p>Appeal to the national independent panel for tender of hiring the supervision firm that resulted into re-evaluation</p>	Finalize tendering process for the construction works
2	Gicumbi	Construction of 12 classrooms and 24 toilets		<p>Feasibility study completed and ESIA approved by the WB subject to minor comments including submission of RDB certificate</p> <p>Preparation of tender documents and RFP.</p>	<p>Failure of tender due to the lack of qualified bidders that resulted into re-advertisement</p> <p>Delay of delivering for the consultants and addressing the comments.</p>	Finalize tendering process for the construction works
3	Nyamagabe	Construction of 73 classrooms and 146 toilets		<p>Feasibility study completed and ESIA approved by the WB subject to minor comments including submission of RDB certificate</p> <p>Tender to hire the 3 contractors for 3 lots is at contract drafting level</p> <p>Tender to hire supervising firm under re-advertisement</p>	<p>Delay in submission and revision of feasibility study reports with the addressed comments</p> <p>Failure of tender for supervision works on 3 attempts</p>	Finalize tendering process for the construction works

#	District	Subproject	Target	Achievement ¹	Challenges	Next quarter target
4	Kirehe	Construction of 70 classrooms and 108 toilets		Feasibility study completed and ESIA approved by the WB subject to minor comments including submission of RDB certificate. Major change is to add on a new site (Paysant L) nearby Mahama refugee camp to accommodate refugee students The contract for both consultancy firms and contractors has been initiated	Delay of submission of the revised version of feasibility reports with the addressed comments.	Finalize tendering process for the construction works and Construction works initiated

Classrooms construction activities supervised in Gisagara, Nyamagabe, Gicumbi, Gatsibo and Kirehe Districts

The target for the reporting period is to complete supervision of construction activities in Nyamagabe, Gicumbi, Gatsibo, Kirehe and Gisagara Districts. MINEMA aligned the tendering process with ongoing implementation progress in aforesaid districts. Therefore, supervision works of classrooms were completed in Gisagara and just initiated in Kirehe June 28, 2021. For the remaining districts, tenders for hiring supervising firms are ongoing and further details are provided in Table 6 above.

Classrooms equipped with necessary materials in the districts hosting refugee camps

The target at the end of the reporting period is to equip constructed classrooms and 26 existing schools in Gatsibo District that had four (4) to three (3) students per desks among which some are very old.

40 classrooms constructed in Gisagara have been equipped by 920 Pupils desks, 40 chairs and 40 table for teachers.

The tender for supply of chairs/school desks for existing classrooms in Gatsibo targeted 7,000 chairs/school desks for 26 existing schools in Gatsibo. Those aforesaid schools include three (3) schools attended by refugee students from Nyabiheke Refugee Camp. However, the number of desks to be supplied were reduced to 6,730 desks given that the awarded contract equivalent to 363,993,420 FRW exceeded the planned budget equivalent to 350,000,000 FRW, hence contract amendment by reducing 4% and remaining with 349,953,270 FRW. This reflects a general increase in the cost of equipment and construction materials in Rwanda due to supply chain challenges caused by COVID-19.

Below are sample of pictures of the supplied desks:



Figure 3: Desks supplied in different schools in Gatsibo District

Table 7: Desks supplied to existing schools in Gatsibo District and constructed classrooms in Gisagara district

District	items	Current quarter	Cumulative	Target	% of Cumulative progress
Gatsibo	Number of desks	998	6,730	6,730	100
Gisagara	Number of desks	920	920	920	100
	Number of chairs for teacher	40	40	40	100
	Number of tables for teacher	40	40	40	100

Table 8: Number of students using supplied desks on existing schools in Gatsibo

Number of students	Total	HC	Refugees	Female
Studying in schools	41,281	40,422	859	21,056
Sitting on desks purchased by the project	12,716	11,765	951	6,632

Table 9: Number of casual workers for supply of desks at existing classrooms in Gatsibo District

#	Activities	Casual laborers by district							
		Gatsibo				Kigali			
		Total number	HC (80%)	Refugees (20%)	Female (50 %)	Total number	HC (80%)	Refugees (20%)	Female
1	Welding	8	100	0	0	25	100	0	0
2	Assembling	6	100	0	0	7	100	0	100
3	Painting	6	100	0	0	32	100	0	21.875
	Total	20	100	0	0	64	100	0	21.875

TVET Constructed in the districts hosting refugee camps in Nyamagabe (1), Gicumbi (1), Karongi (1), Kirehe (1) & Upgrade in Gatsibo (1)

Many refugees and host community members lack post-secondary education options, particularly TVET, which can help employment prospects. Subsequently, TVETs were planned to be constructed in Nyamagabe, Karongi, Gicumbi and Kirehe Districts, and upgraded in Gatsibo District. At the end of this reporting period, it was targeted to construct them at 10% and implementation progress is presented in the following table per each district. Trades of each TVET have been selected based on gaps identified within the districts and are summarized in the table below.

Table 10. Proposed trades

District	Proposed trades
Karongi	Boat making and mechanics; Fish farming; Tailoring; General basic mechanics
Gicumbi	Carpentry; Welding; Masonry; Automotive engine technology; Tailoring.
Gatsibo	Masonry; Carpentry; Tailoring; Welding.
Nyamagabe	Carpentry, Masonry; Welding.
Kirehe	Masonry; Carpentry; Tailoring; Welding; Electrician.

Table 11: Implementation progress of feasibility studies for construction/upgrade of TVETs

#	District	Subproject	Target	Achievement	Comment	Next quarter target
1	Gatsibo	TVET upgrade	Construction works initiated	Feasibility study completed with ESIA approved by the WB subject to minor comments including submission of RDB certificate The contractor and supervision firms hired	-	Tendering process for the construction works and initiation of works
2	Gicumbi	TVET Construction		Ongoing FS, under preparation of inception report	Repetitive failure of (3 times) of tender due to lack of at least 3 candidates required to pass on shortlisting phase	Tendering for feasibility study
3	Karongi	TVET Construction		Ongoing FS, under preparation of draft feasibility study reports.	Failure of tender due to lack of qualified bidder The contract has been extended at 45 days due to that the contractor fail to deliver on the contract period	Conducting feasibility study report
4	Kirehe	TVET Construction		Feasibility study report and ESIA cleared commissioned by the district were cleared by the WB.	Delay on addressing comments of safeguards document Delay of the clearance tender documents	Tendering for MUSAZA TVET construction activities in Kirehe District
5	Nyamagabe	TVET Construction		Ongoing preparation of final feasibility study documents and comments to be addressed were provided to the consultant,	Delay of delivering for the consultants and addressing the comments. Given that there is a shortage of budget, the TVET has been cancelled for the next step by the steering committee members	Conduct feasibility study report

Health Center equipped with necessary materials in Gatsibo District

Equipment for the Ngarama Health Center was completely supplied and is in use. Supplied equipment include (i) Maternity and neonatal equipment(Delivery bed, radiant warmer, oxymeter, Ambu bags for Children, Electric vacuum, Foeto cardiotocograph); (ii) Medical

kits(Delivery Kit / Episiotomy, Dental Kit and Kit spéculum vaginal); (iii) Medical furniture(Examination tables, Standing exam light, Stretcher Drug dispensary trolley, Mattresses, Patient bed, Bedside cabinets and Wheel Chairs); (iv) Lab Equipment(Electric Centrefuge/rotator, Microscope binoculaire mixte, Lab Chairs for lab technician, Water distiller); (v) Sterilization machine; (vi) Laundry machines (Washer extractor, Dryer, Ironer and Consumables); (vii) Linen (Medical bed sheets pairs and Gowns) ; (viii) General medical equipment(Otoscopes, Stethoscopes, Portable pulse oximeters for Adult, Glucometers, Digital Thermometers, Chronometer, Scale for Adult and children, Oxygen concentrator, Bed Pan and Lab fridge) ;and (ix) Office furniture(Office Chairs, metallic and non-metallic office cupboards, Chairs for patients /Benches and Office Tables).

The health center got incredible increase in number of equipment that improve health service delivery. Instances are increase from four 4 to 40 beds, Foeto cardiocographes to facilitate in monitoring women on labor at a distance, laundry and sterilization machines that fasten to get clean and sterile equipment and reduced risks of infections to cleaners who used to wash by hands where sometimes they came into contact with blood while washing, etc.

Table 12: Number of equipment lots supplied to the Ngarama Health Center

Equipment	Q 4	Cumulative	Target	% of supplied equipment (lots/items)/ Completed.
Lots	3	9	9	100

Sample of pictures for equipment supplied



Figure 4: Surgical lamp and Lab Fridge supplied at Ngarama HC



Figure 5: Radiant warmer and Autoclave supplied at Ngarama HC

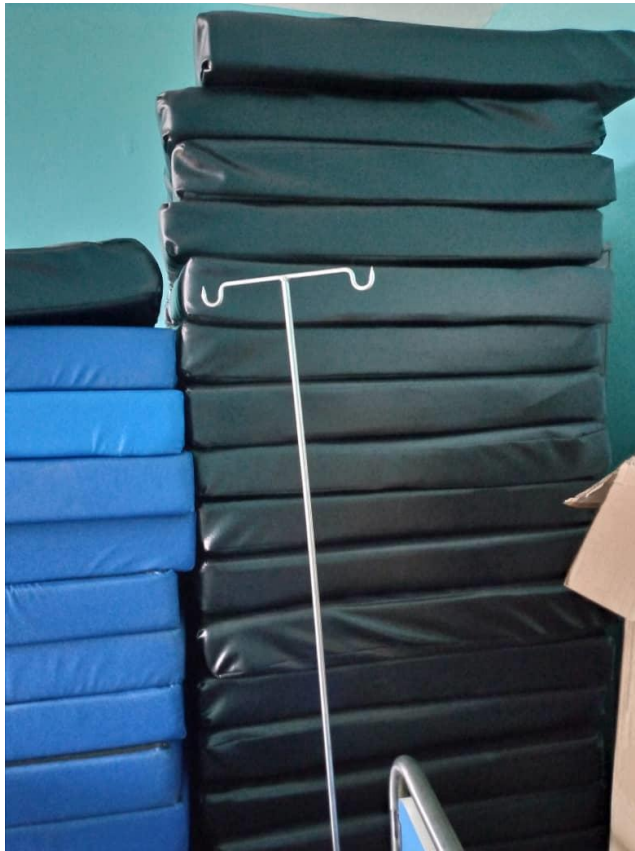


Figure 6: Mattresses supplied at Ngarama HC

Existing TVETs equipped with necessary materials in Gisagara District

Gisagara had completed construction activities at Mugombwa TVET school nearby the Mugombwa refugee camp. The center needed equipment in order to help its host community members and refugees get post-secondary option and prosper from employment. The district hired a supplier for the identified equipment and the company has provided the equipment for Mugombwa TVET at 100% as planned in this reporting period. Among the equipment supplied in this TVET includes tailoring machines; office furniture including chairs and tables, electrification and masonry workshops equipment.

Below are the pictures of the supplied materials.

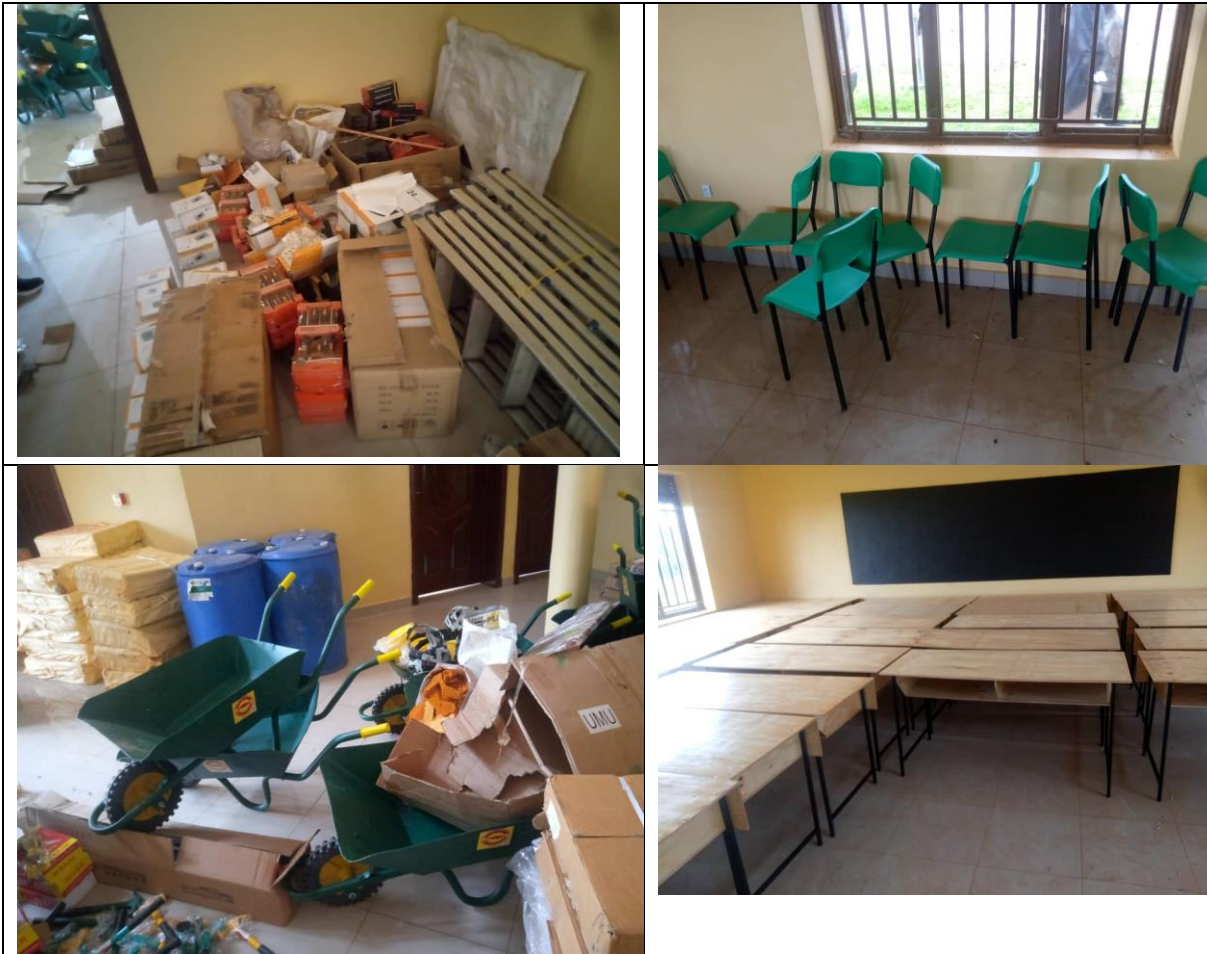




Figure 7: Equipment supplied to equip Mugombwa TVET

Table 13: Number of casual workers for supply of MUGOMBWA TVET equipment in Gisagara District.

#	Activities	Casual labours			
		Gisagara			
		Total number	HC (target 80%)	Refugees (target 20%)	Female (50 %)
1	Supplying (packing and unpacking the supplied material from the vehicles)	17	100	0	0

Health centers construction and District hospital update

Basic needs of refugees are met in camp-based health clinics run by UNHCR (implementing partner). However, for more serious health issues, refugees are referred outside to district hospitals and higher facilities. Some issues are also addressed through health centers at the sector level. The progress for planned health center construction and district hospital upgrade subprojects is presented below.

Table 14: Implementation progress of health center subprojects as of June 2021

District	Subproject	Target	Achievement	Comments	Next quarter target
Gicumbi	Health center upgrade	Construction works at 40%	Ongoing FS was commissioned by the District and final feasibility study report has been submitted to WB and provided comments	Delay for submission of documents Covid-19 restriction has impacted the study, including consultation meetings not allowed;	Tendering process for the construction works of RUVUNE Health center in GICUMBI
Nyamagabe	Health center construction	Construction works at 40%	Ongoing preparation of final Feasibility Study document	Delay for submission of documents Covid 19 restriction has been impacted the study, including consultation meetings not allowed;	Tendering process for BUGARAMA health Center construction works and compensation in NYAMAGABE

District Hospital upgrade in Kirehe District Hospital

Kirehe district selected Kirehe District Hospital to be upgraded to serve the communities living in Kirehe District and refugees hosted in Mahama refugee camp. It was projected to upgrade the hospital at 30%; at the end of reporting period, there is ongoing preparation of feasibility study document, the consultancy firms delayed in submission of reports and address the comments.

Water supply system extension and rehabilitation in Karongi, Gatsibo and Nyamagabe Districts

The refugee presence often affects the water table as refugees and host communities utilize the same water source. Refugees generally enjoy a higher level of service delivery through

United High Commission for Refugees (UNHCR) implementing partners, which can be a source of tension with host communities. For 2020-2021, investments for this subproject include extension and/or rehabilitation of water supply systems for: (a) host communities in Karongi and Nyamagabe districts given that refugees in the corresponding districts have a higher level of water supply than their host communities; and (b) both host communities in Gatsibo and refugees of Nyabiheke experience shortage of water supply below humanitarian standards.

Table 15: Implementation progress of water supply system as of June 2021

District	Subproject	Target	Achievement	Comment	Next quarter target
Nyamagabe	Rehabilitation and extension of WSS	Construction works at 10%	The Contract signed with individual consultancy for Preparation of ESA report	Tender for hiring consultancy firm to conduct ESA failed at the first time resulting into amendment of ToR to reduce the requirement.	Finalize ESA report
Karongi	Rehabilitation and extension of WSS	Construction works at 10%	Ongoing preparation of ESA report	Failure of tender	Finalize ESA report
Gatsibo	Improving capacity of GIHENGERRI Water Treatment Plant, and network extension to Nyabiheke refugee camp	Construction works at 10%	Tender to hire contractor and supervision firm has been initiated	Delay of clearance of ToRs for supervision of works and addressing comments	Tendering process for the construction works of WSS phase 1 in Gatsibo district

Sub-component 1(b): Socio-economic Investments

The socio-economic investments subcomponent has two main subproject types, namely markets and roads. Markets are new subprojects planned to be constructed and or upgraded in year two in order to benefit both refugees and host community members living in Nyamagabe, Gatsibo, Gisagara and Gicumbi districts whereas, procurement process for hiring a consultant firm to conduct the feasibility study and prepare ESIA/ESMP and RAP for roads to be upgraded in Karongi and Kirehe districts commenced in Year 1.

Market and selling point respectively constructed in Nyamagabe (1) and Gicumbi (1) as well as market upgraded in Gatsibo (1) and Gisagara (1)

Markets in and around refugee camps are in poor condition or non-existent. This subcomponent will finance market facilities outside camps for the use of refugees and host communities depending on the need. Subprojects could include: (i) construction or upgrading of market places and stalls; (ii) installation of lighting for security and extended business hours; (iii) construction of water and toilet facilities for markets; and (iv) construction of child care

facilities to encourage women’s participation and minimize the problem of child neglect. This reporting period targeted the construction works at 40% for construction/upgrade of markets in Nyamagabe (1), Gatsibo (1), Gisagara (1) and construction of selling point in Gicumbi (1) and implementation progress is summarized in the following table.

Table 16: Implementation progress markets subproject as of June 30, 2021

District	Subproject	Target	Achievement	Comments	Next quarter target
Gatsibo	Upgrade of market	construction works at 40%	the final feasibility study document was reviewed and approved	Delay in submission of revised documents	Tendering process for Mugeru market construction in Gatsibo district
Gicumbi	Construction of selling point	construction works at 40%	Ongoing Feasibility study, the consultancy firm is preparing the final reports	Delay in evaluation of tender The consultancy firm delayed to submit the documents	Tendering process for the KAGEYO Selling point construction works in GICUMBI District
Gisagara	upgrade of market	Contractors and supervising firm hired	The final feasibility study document has been submitted and is under review	Delay of submission of documents, for special case of lockdown as preventive measures in Gisagara district.	Feasibility study report for Mushu market
Nyamagabe	Construction of market	Contractors and supervising firm hired	Final feasibility study report has been submitted, and the consultant is preparing RAP	Delay of submission of revised document of FS	Feasibility study report for Ryarubondo market

Roads rehabilitated or upgraded in Kirehe and Karongi Districts.

Roads to be upgraded were increased from 33km to 110 km, in order to link refugees and host communities with economic opportunities, including economic infrastructures. This will complement and leverage government investments in the area, including the transformation of marshlands for cultivation in Kirehe. In Karongi, 43 km will be upgraded in order to reach Gisovu tea factory and 67 km of road will be upgraded in Kirehe to reach Nasho around which five (5) sites are to be prepared for irrigation projects and a tomato processing plant.

The project restructuring in June 2021 saw responsibility for the roads subprojects to RTDA, as the institution with the necessary mandate and expertise. RTDA will oversee both works and supervision.

At the end of the reporting period it was targeted to have the contractor to do Design, Build and Maintain on board, the feasibility study has been initiated, the inception report has been submitted and approved, the consultancy firm is preparing the interim feasibility study. Due to covid-19 restriction measures taken during this reporting period, the record of traffic movement had put on hold, to record the maximum traffic travel movements, and also the

meetings are not allowed this had impacted the data collection of developing safeguards documents.

Component Two: Economic Opportunity

This component has two sub-components, namely Subcomponent 2(a): Access to finance and Subcomponent 2(b): Capacity building for access to finance. This component will support implementation of the government’s commitment to improve refugee self-reliance, as described in the Strategic Plan for Refugee Inclusion (SPRI). The activities will expand economic opportunities and promote access to finance and private sector investment in the six districts hosting refugee camps. In order to guide implementation of this component, a Matching Grant Manual (MGM) was prepared and summarized.

Subcomponent 2(a): Access to finance

This sub-component provides finance to refugees and Rwandan entrepreneurs. Matching grants are provided as a complement to loans offered by Participating Financial Institutions, including Saving and Credit Cooperatives (SACCOs), Microfinance Institutions (MFIs) and Commercial Banks. The grant serves both as collateral and a repayment incentive for the loan. Going through financial institutions allows for proper screening and appraisal of projects and ensures that the subprojects are market-based and viable. During this reporting period, activities that were implemented are described below.

Table 17: Progress for access to finance as of June 30, 2020

Activity	Target 2020/2021	Achievement	Comments	Next quarter target (Q1 2021/2022)
Provide matching grant with loan qualifying projects to refugees and host community beneficiaries	Provide grant to entrepreneurs, cooperatives, MSMEs RWF 302 million	630 beneficiaries received matching grant worth RWF 91,132,880.80	Matching grant was given through one PFI (AEC RT Ltd) and others are in the process.	All 5 PFIs on board to provide the matching grant to the beneficiaries in all targeted districts.

Subcomponent 2(b): Capacity building for access to finance

This subcomponent aims to strengthen the financing value chain and improve access to finance in the six target districts. Prior to capacity building, capacity needs assessment is a crucial step planned to help build capacity along the financing chain from potential

beneficiaries (enterprises, cooperatives, etc.), to PFIs (including SACCOs) and the network of Business Development Advisers (BDAs) that will help to generate Bankable proposals.

Table 18: Progress of activities for Needs Assessment of beneficiaries of component two

Activity	Target End 2020/2021	Achievement	Comments	Next quarter target (Q1 2021/2022)
Conduct Needs Assessment	Conducting Skills Need Assessment	The final report has been approved by the BRD and Project Stakeholders. Draft ToRs for capacity building are available waiting to be approved by relevant authorities.	The Skills Need Assessment produced a report that will be based on to hire the Capacity building firm.	Build the capacity of PFIs

Table 19: Progress of activities to support implementation of component two

Activity	Target End 2020/2021	Achievement	Comments	Next quarter target (Q1 2021/2022)
Translate summarized MGM	Firm to translate Summarized MGM hired.	Contract signed	To be finalized as soon as possible due to some amendments done with in the manual.	Translation assignment to start
Hire Grant Officers	2 Grant Officers hired,	Offers were re-advertised, currently 45 suitable candidates have been selected to pass written exam and oral interviews	The recruitment process was not successful as BRD was not able to find suitable candidates for the two vacant positions.	Complete recruitment of as soon as possible.
Engage PFIs and sign with them a Subsidiary Financing Agreement and Disbursements to engaged PFIs	Engage PFIs and sign contracts and Disbursement of funds to the PFIs engaged.	16 PFIs ² engaged. Five PFIs ³ have signed subsidiary financing agreements with BRD. Four PFIs ⁴ are under negotiation and due diligence stage thus are expected to sign the subsidiary financing agreements. Funds were disbursed to two PFIs	BRD expected additional subsidiary financing agreement to be signed with 6 other PFIs (COGEBANQUE, I&M Bank, SACCO UMURAGE GATSIBO, SACCO ISUNGE NGARAMA, SACCO IMBEREHEZA MAHAMA and BUKURE SACCO). Additional	Engage more PFIs and sign with them the SFA

² AEC, BPR, KCB, UMUTANGUHA FINANCE, BK, COGEBANQUE, EQUITY BANK, KAGEYO IMBONI SACCO, KABARORE ISONGA SACCO, GAHARA JYAMBERE SACCO, NGARAMA ISUNGE SACCO, GATSIBO UMURAGE SACCO, I& M Bank, IMBEREHEZA MAHAMA SACCO, INKUNGA COOPEC and BUKURE SACCO

³ AEC, BPR, UMUTANGUHA FINANCE Ltd, KCB and BK

⁴ SACCO IMBEREHEZA MAHAMA, SACCO UMURAGE GATSIBO, SACCO ISUNGE NGARAMA and BUKURE SACCO

Activity	Target End 2020/2021	Achievement	Comments	Next quarter target (Q1 2021/2022)
		of BPR Atlas Mara and AEC RT Ltd.	disbursements to final beneficiaries are expected from 3 PFIs (BPR, UMUTANGUHA Finance “2 pipelines” and AEC).	
Preparation of Subsidiary Financing Agreement between MINEMA and BRD	Signed SFA	Subsidiary Financing Agreement (SFA) was approved.	The SFA has been signed between MINEMA and BRD	
Developing PPT and FAQs	PPT and FAQ Document	PPT and FAQ Document draft has been produced	The Document is still on preparation	To have the approved document
Roll out public awareness (Awareness activities)	Publicity of the project done on Radio Rwanda, Rwanda Television and other media outlets.	Production of project success stories documentary and TVs and Radios spots on component two awareness.	Awareness campaigns were hampered by COVID-19.	BRD to contract Communication Agency to carry out awareness campaign on their behalf
Disbursement of Funds to BRD and Project Pipelines for beneficiaries from PFIs	Analyze and approve the pipeline of eligible matching grant to beneficiaries	The pipeline of estimated matching grant of RWF 91,132,880	Continuous field monitoring to track the beneficiaries reporting increase in income and number of employees.	Continuous analysis of the submitted pipelines from BRD.
Coordination Meetings	Hold regular monthly coordination meetings.	Held 9 coordination meetings between MINEMA and BRD.		Once a month, hold a regular meeting and an ad hoc meeting as required.

Component Three: Environmental Management

This component seeks to address some of the negative impacts of the presence of refugee camps on host communities. Two activities are anticipated: the rehabilitation of ravines in and around refugee camps and the construction of surface water reservoirs. Together these activities will address existing and prevent future damage. The surface water reservoirs will collect runoff water, which in turn can be used for productive purposes (irrigation, livestock or fisheries).

A prioritization assessment for ravines to be rehabilitated was jointly conducted from September 12 to October 8, 2019 by MINEMA, target districts, former Rwanda Water and

Forestry Authority (RWFA) as well as World Bank teams and 28 ravines have been identified. For the 28 ravines identified, a tender for conducting feasibility study and preparation of ESIA and RAP was initiated in the first year of implementation which ended with submission of technical proposals on June 30, 2020. The contract of conducting the FS was signed on 27 April 2021 for 6 months duration.

Table 20: Progress for rehabilitation of ravines and construction of surface or ground water reservoirs

Activity	Target End 2020/2021	Achievement	Comments	Next quarter target
Rehabilitation of ravines and construction of surface or ground water reservoirs	Contractor for ravines rehabilitation and construction of surface and or ground water reservoirs, and consultancy firm to supervise construction activities hired.	Inception report for the feasibility study for ravines rehabilitation and construction of surface and or ground water reservoirs submitted.	The contract negotiation has protracted and once finalized, the consulting firm failed to mobilize and bring on board the team leader and the senior hydrologist, whereas new candidates were proposed and then evaluated and cleared by both MINEMA and the WB, just before they are mobilized.	Draft & final feasibility study report and draft ESIA and RAP.

Component Four: Project Management/M&E

This component covers project management, implementation and supervision at MINEMA and the districts, including procurement and financial management (FM); Monitoring and Evaluation (M&E); and compliance with safeguards policies. It supports the operational costs of the inter-agency Project Steering Committee (PSC) and Technical Team (TT), capacity building, Stakeholder Engagement including Grievance Redress Mechanism and strategic communications for raising awareness on refugees right to work.

Staffing

During the year 2020-2021; **Five positions were filled:** Program Manager, Environmental Specialist, Karongi DFS, one Civil Engineer and Communication Specialist. The total number of personnel employed stands at 17 out of 19 required at 100%. Two (2) remaining staff are Civil Engineers who are still on hold in order to wait for finalizing ongoing process of transferring roads implementation responsibilities to RTDA.

Monitoring and Evaluation (M&E)

Project activities continued to be monitored and, data were collected manually then reports submitted using hard and soft copies. Baseline study is ongoing and development of P-MIS that will support monitoring and evaluation of project activities was finalized.

A baseline study will identify base values for relevant project indicators. The baseline study will help understand the starting point of key elements of the project against which progress will be measured.

Below is a table describing progress against target

Table 21. Baseline survey implementation status

Activity	Target End 20/21	Achievement	Comments	Next quarter target
Conduct project baseline survey	Final baseline survey report	Draft report of the baseline survey with dataset has been submitted by the consultancy firm		Final baseline survey report

Development of P-MIS

The P-MIS will support monitoring of project activities. The initial plan for the development of the P-MIS was to hire a consultancy firm to develop the system. However, the World Bank offered to support and fund the finalization of the P-MIS on July 21 2020. Its development activities have been finalized with the support of the WB consultant as planned. Progress of subsequent activities of this reporting period are summarized in the table below.

Table 22: P-MIS development implementation status

Activity	Target End 20/21	Achievement	Comments	Next quarter target
P-MIS development	P-MIS deployment on hosting environment	P-MIS has been deployed and hosted in the National Data Center under the following link: pmis.minema.gov.rw Hosting agreement contract with the National Data Center was signed in mid-April 2021	RISA advised that all the systems from MINEMA be hosted on the same server in order to minimize hosting costs. Therefore, MINEMA systems have been deployed to a new server that will host all the systems. Data from EMS have been migrated to the new server.	Operationalization of the P-MIS which include routine support of the end users and address comments provided.

Training of P-MIS users	Training of P-MIS users	Users were virtually trained on all data entries, reporting and analysis of generated reports from April 27 to 30 Refresher face to face training on the use of the P-MIS were also conducted from June 15 to 18, 2021		
Operationalization of the P-MIS	P-MIS Operational	System administration, User management, data entry, analysis as well as provision of routine support to the users.		Operationalization of P-MIS

Compliance with Safeguards Policies

In accordance with the Environmental and Social Management Plan (ESMF) and Resettlement Policy Framework (RPF), safeguards screening was initiated by the implementing districts in year one (1) of implementation for the new subprojects approved for this year two (2). Safeguards screening reports were approved by the WB and recommended instruments are under preparation for health facility, water supply system and markets construction/upgrade as well as roads upgrade and ravines rehabilitation. For TVET to be constructed in Kirehe District, ESIA has been cleared by the WB whereas for classrooms to be constructed, ESIA's have been cleared by the World Bank subject to minor comments including submission of RDB certificate as early described in previous sections.

For classrooms constructed in Gisagara, a kick-off meeting for supervision works was held on Oct 6, 2020 with the supervising firm to discuss highlights of the assignment. For monthly site visits monitoring activities, two (2) site visits were also conducted on October 27 and Nov 19, 2020 in Q2 and another one in Q4 on June 14 and 15, 2021. Other monthly site visits (like those of Q3) were hindered by lock down in Kigali that was followed by movement restrictions in Gisagara and then between districts due to COVID19.

In regards to fulfilling requirement for additional financing and project restructuring, ESMF have been updated, cleared by the WB and then published on MINEMA website on May 22, 2021. The SEP and CFM have been also updated and were under review by WB as of the end of the reporting period.

Summary of compliance with safeguards for construction activities in Gisagara as of June 30, 2021

Subproject	Anticipated Impacts during this reporting period	Mitigation measures	Monitoring Indicators	Subproject Compliance	Recommendations
Classroom construction in Gisagara	Risk of constructing infrastructures that are not accessible by everyone like People with Disabilities (PWD) user friendly by everyone like toilets for male and females, blackboards.	Construct infrastructure with ramps for PWD and separate toilets for males and females as well as blackboards placed at least at 60 Cm from the floor.	User friendly infrastructure with ramps for and accessible with PWD and separate toilets for males and females constructed as well as blackboards placed at least 6at 0 Cm from the floor.	<ul style="list-style-type: none"> Accessibility by PWD Blackboards are placed at 60 Cm at GS Mugombwa, 40 Cm at EP Nyabitare and EP Linda. Ramps have been constructed on all classrooms except where there is a need of ramp to access ground floor classrooms at Nyabitare, smoothing right of ways towards toilets at all sites for PWD as well as ramp from block of GS Mugombwa toilets near toilets at the back of the ground floor.	Not applicable Ramp to access ground floor classrooms at Nyabitare to be catered for in addendum of constructing the retaining wall at Nyabitare. Constructing ramp from back of ground floor classrooms in order to access toilets at GS Mugombwa and smoothing right of ways for easy of accessibility for people with disability under maintenance period by the District.
	Risks of accidents or injuries of personnel on sites.	Fencing, wearing PPEs availing emergency kits with trained workers as well as referring injured to the health facilities. Ensuring that hired casual labors have health insurance	Construction sites fenced; Emergency kits and trained workers in place; PPEs like boots, helmets, mask, jackets, gloves used by personnel, number of personnel in possession with health insurance and number of injured personnel referred to health facilities.	Sites are fenced; emergence kits; Boots, helmets, masks, gloves, and jackets were provided and used by all personnel. All personnel had health insurance and Injured personnel were immediately referred to the health facilities.	Not applicable
	Risks of COVID-19 infection of personnel on sites.	Follow prevention measures including wearing masks, recording temperature, and address of everyone accessing site at entrance, social	Wearing masks by every personnel; temperature and address recorded; hand washing facilities in place and signposts elected. Workers reduced on sites and	Wearing masks by everyone; temperature and address recorded; and signposts were still in place (see below pictures). Workers were reduced to 30% and inter districts movements	Continue measures in place as per MoH recommendation and or cabinet resolution.

Subproject	Anticipated Impacts during this reporting period	Mitigation measures	Monitoring Indicators	Subproject Compliance	Recommendations
		distancing, frequent hand washing, signposts on sites with COVID-19 prevention measures and reducing workers on site as well as complying with staying in the district.	inter-districts movements restricts.	were restricted. Essential workers (for welding) were facilitated to get permission to go to the site.	
	Noise pollution	Work from 7AM to 6PM and schedule noisy activities in weekends.	Actual hours worked on	Done.	Continue the schedule
	Risk of fire outbreak	Putting alarm and fire extinguishers in place	Number of alarm and fire extinguisher in place	Alarms and fire extinguishers are in place	Not applicable
	Risk of lightning strike	Installation of lightning rods	Lightning rods installed at all buildings	Lightning rods were installed at all buildings	Not applicable
	Risks of accidents or injuries	Staircase guard of G+1 floors	Staircase guard on all G+1 floor	All G+1 floor have staircase guard	Not applicable
	Risks of COVID-19 infection of personnel on sites.	Follow prevention measures including wearing masks, recording temperature, and address of everyone accessing site at entrance, social distancing, frequent hand washing, signposts on sites with COVID-19 prevention measures.	Wearing masks by every personnel; temperature and address recorded; hand washing facilities in place and signposts elected.	Wearing masks by everyone; temperature and address recorded; washing facility for frequent hand washing and signposts were still in place.	Continue measures in place as per MoH recommendation and or cabinet resolution.
	Risk of non-payment of workers	Ensuring that all workers are paid	All workers paid	No worker claims not being paid	Not applicable
	Various complaints	Conduct monthly consultation meetings and monitoring sites visits	Number of consultation meetings and monitoring sites visits conducted	4 monitoring visits were conducted but some were put on hold due to lockdown of Kigali that was mostly followed by inter districts movements restrictions because of COVID19 prevention measures. Consultation meetings were held with heads of	Conduct consultation meetings and monitoring sites to ensure that recommendations implemented, all complaints have been resolved and/or have proactive outreach meeting

Subproject	Anticipated Impacts during this reporting period	Mitigation measures	Monitoring Indicators	Subproject Compliance	Recommendations
				schools, limited number of former workers, host community members as well as complainants.	



Figure 8: Temperature and address recording as well as hand washing stations with fences before accessing the site



Figure 9: Illustration of site visit meeting with workers at GS Mugombwa

Stakeholder Engagement

According to the Stakeholder Engagement Plan (SEP), summary of meetings planned and held are presented in the table below. Most meetings were held virtually, and the details are presented in annex 1.

Table 23. SEP activities implementation update

Types of meetings	End target of 20/21	Achievement	Comments	Next quarter target
PSC meetings	2	2	-	1
TT meetings	2	2	-	1
Quarterly coordination meetings	4	-	-	1

Types of meetings	End target of 20/21	Achievement	Comments	Next quarter target
Monthly coordination meetings with implementing partners	24	15	9 meetings were held with BRD and 6 with DFSs	8
Meetings with contractors	28	23	Meetings were held with consultancy firms and contractors.	6
Monthly coordination meetings with camp-based partners	12	4	Meetings on hold due to COVID19	Upon the uplifting of covid-19 preventive measures

Technical Team (TT) & Project Steering Committee (PSC) Meetings

During this reporting period, two TT and two PSC meetings were held respectively in Q1 and Q3.

In Q1, TT meeting was held on July 30,2020 in order to review project Annual Progress Report (APR) for year that ended on June 30,2020 prior to the approval of the Project Steering Committee (PSC) Meeting. The report was reviewed and inputs provided. Mainly following points recommendations were provided: (i) institutions to provide feedback on required documents to be reviews not later than 10 days in order to minimize encountered delays, (ii) Kirehe District was required to involve UNHCR for future classrooms construction activities in order ensure refugee inclusions. Not only that, brief presentation was provided on the progress made so far. To that end, it was recommended to remove tender related to development of P-MIS on procurement plan given that the WB provided technical support for its development process and that feasibility study commissioned by and conducted for construction of Musaza TVET in Kirehe District should be updated and submitted to MINEMA for review by August 7,2020.

The PSC meeting was also held on August 15,2020 for the third time in order to approve the APR and minutes of second PSC meeting. Following second PSC meeting of bringing Rwanda Polytechnic (RP) on board and designating project focal point, a meeting was held on October 29, 2020. Outcomes of the meeting include forming a technical team made by MINEMA, RP and WDA and organizing physical meeting for identification of programs to be conducted in the TVETs prior to plan for the design of construction of TVETs as well as required equipment and material to be supplied depending on the program and option that will be offered in the TVETs.

In Q2, TT and PSC meeting were held on February 18 and February 25, 2021 respectively for approval of annual work plan of 2021-2022, review implementation progress and approval last PSC meeting. In addition to that, participants were informed about relocation of refugees from high risk zone and the proposed Additional Financing and Project Restructuring.

Grievance Redress Mechanism

Community Feedback Mechanism was prepared in order to guide implementation in regards to grievance redress mechanism. In regards to fulfilling requirements of AF and project restructuring, the CFM was updated and shared with WB for review and clearance.

Below mentioned is progress against target

Table 24. GRM implementation update

Activity	End target of 20/21	Achievement	Comments	Next quarter target (Q1 21/22)
Establishment and training of Grievance Redress Committees (GRCs)	11 GRCs established; Training established GRCs upon lighting of measures	6 sites specific GRCs were established and trained for classrooms constructed in Gisagara District	Trainings were put on hold due to COVID-19 prevention measures including locking down of Kigali that was followed by restriction of movements in Gisagara and inter-districts movements. Establishment of GRCs for other subprojects were aligned with implementation progress	Establishment and training of 48 GRCs for classrooms to be constructed in Gatsibo, Kirehe and Nyamagabe

During this reporting period, grievances were reported in person, letters and received via telephone messages (WhatsApp group for monitoring classrooms constructions in Gisagara). 14 out of 19 reported complaints related to ongoing construction activities in Gisagara were addressed as described in table below. Addressed complaints were confirmed in monitoring visit held on June 14 and 15, 2021. Pending complaints will be addressed under operation and maintenance period by the District.

Summary of grievance redress as of June 30, 2021

SN	Types of complaints	Summary of complains	Corrective actions taken in response to the complaint	Period taken to resolve complain	Status
1.	Injuries	6 injuries of casual laborers including 4 minor injuries and 2 others of which one who was electrocuted at foot during fixation of trusses on toilet block; another who fell down and had a chest injury and left arm during assembling and fixing roof structure of toilet block both at Nyabitare site.	3 were instantly managed on site 3 managed at the hospital	Immediately 2 weeks ⁵	Resolved
2.	Accident	2 Accidents of vehicles transporting construction materials due to small bridge destruction and heavy rain for earth road under rehabilitation (drivers were safe)	Small bridge destruction: local authorities facilitated to get materials transported Heavy rain for road under rehabilitation: safe drive	Immediately	Resolved
3.	Noise pollution	Concern about noise disturbance during class hours	Scheduling activities that may cause too much noise (casting) in the weekend and consulting directors of schools on suitable time	Immediately	Resolved
4.	Delays of funds disbursement	The district delayed the payment to the contractor as stipulated in the contract.	Payment was done	Immediately	Resolved
5.	Delay in payment of casual labors	One month of delays in payment of casual labor with contractor claiming on insufficiency of funds.	Payment of part of the invoice	4 days	Resolved
6.	Inaccessibility of site by some workers	Restriction of movements of workers between Gisagara and other districts following COVID-19 prevention measures.	Requesting permission to National Police	3 weeks	Resolved
7.	Reduction of workforce	Reduction of casual labor up to 30% due to COVID19 restriction measures	Ensuring safety of workers by abiding to prevention measures	Immediately	Resolved
8.	Destroyed garden at GS Mugombwa	Existing garden near the block close to the gate has been destroyed	In kind compensation of the garden	2 weeks	Pending
9.	Site not well cleared in front of GS Mugombwa kitchen	Remaining of excavated land not fully removed on in front of the kitchen that may cause accidents during rainy seasons	Complete site clearance in order to remove on excavated land	2 weeks	Resolved
10.	Non-fully paid debt of	Out of 39,600 that a worker of supervising firm owed a host	Full payment of the debt	-	Pending

⁵ These injuries resulted into physical disability and required documents were submitted to the insurance company for review.

SN	Types of complaints	Summary of complains	Corrective actions taken in response to the complaint	Period taken to resolve complain	Status
	supervising firm worker to a host community member	community member 9600 was not paid			
11.	Risk of accident due to unfenced school at EP Linda	The school is partially fenced and motorcycles, vehicles and bicycles pass through the school and this poses risks of accidents to students	District to do fencing	-	Pending
12.	Constructed block at risk due to lack of retaining wall at EP Nyabitare	The block is constructed above the access road and will be at high risk in rainy season due to lack of retaining wall	Constructing retaining wall under additional works	-	Pending
13.	Risk of accidents at the side of the constructed block toilet that is hanged high at EP Nyabitare	The constructed block toilet that is hanged high without guard and this may pose risks of accidents	District to construct the guard	-	Pending

Strategic communications for raising awareness on refugees right to work

Awareness of refugees right to work has been consistently identified as a major challenge to the economic inclusion. Targeted communication campaigns towards employers, including private sector federation, host communities and refugees themselves were planned in this reporting period but not conducted due to covid-19 preventive measures.

The project was launched on Dec 4,2020 in Gisagara District at Groupe Scolaire Mugombwa where there are ongoing classrooms construction activities.

Capacity building

The project planned to (i) capacitate project implementing partners staff districts staff, who works on the project, on the project key documents (financing agreement, Project Implementation Manual (PIM), Matching Grant Manual (MGM) as well as District Implementation Agreement (DIA) for them to be familiar with all the requirement, particularly World Bank requirements, as per the project documents for smooth implementation of component one; (ii) train users of P-MIS; and (iii) members of GRCs.

In Q2, the training was held virtually on September 23 and 24, 2020 and conducted by Jya Mbere Project Staff with World Bank support. The objective was to carry out the training and orientations so as to help district staff understand project's implementation requirements and expectations, as well as ease coordination between MINEMA and the District. Trained participants are 75 including (i) 72 District staff, Nine (9) MINEMA staff (six (6) DFSs, Project Manager, Environmental Specialist and Communication specialist) as well as (iii) eight (8) focal points from BRD (1), Ministry of Infrastructure (MININFRA) (1), Ministry of Environment (MoE) (1), MINEDUC (1), MoH (1), RTDA (1), WASAC (1) and WDA (1).

In Q3, trainings on P-MIS use were conducted virtually due to COVID-19 prevention measures. During Q4, refresher face to face training on P-MIS and trainings for established GRCs in Gisagara were provided.

Financial Management and Disbursements

The disbursement rate of the project is at 14.07 %. In Q3, the Project received disbursement of US\$8,880,037.29 of which US\$6,959,202.29 is from the credit portion, and US\$1,920,805 from the grant portion.

The BRD, Gisagara and Gatsibo Districts have received the second disbursement, while the remaining districts are still using their first disbursement.

Table 25: Summary of Disbursement received

Donor commitment	Amount allocated (US\$)	Amount Disbursed (USD)	Disbursement rate
Credit	35,000,000	8,519,389.09	24.34%
Grant	25,000,000	2,739,098	10.95%

Additional Financing (AF) and Restructuring of the Project

During this reporting period, the team finalized a proposal for the AF to respond to the impact of COVID-19 and the Project Restructuring to bring the Rwanda Transport Development Agency (RTDA) in as an implementing agency to the project to take on the implementation responsibility of the two road subprojects in Kirehe and Karongi Districts. The project team prepared a proposal for AF and Restructuring and initiated the preparation of a Strategy Note which is a requirement for accessing the IDA19 Window for Host Communities and Refugees (WHR). The proposal for the AF was for US\$20 million. The Restructuring request was to bring in the RTDA for the roads and to extend the closing date of the project for two years from October 2024 to October 2026 to allow for the implementation of road subprojects based on the design-build-maintain model. The proposal was approved by the World Bank Board in late June 2021.

Under the Strategy Note, the government of Rwanda reaffirmed its commitment to the social and economic inclusion of refugees. Specific commitments made in the Strategy Note include the following:

The education pledge commits to:

- (iii) Improve the quality of education by upgrading school infrastructure in refugee hosting districts, equipping them and allocating scholastic materials to accommodate refugees and the host community.
- (iv) Expand technical and vocational education and training to benefit 30 percent of refugees and host communities by constructing or upgrading Technical and Vocational Training Education (TVET) infrastructure in refugee hosting districts, equipping them, and allocating scholastic materials.

The jobs and livelihoods pledge commit to:

- iv) Promote joint agriculture projects between refugees and host community households to create jobs, increase agricultural production paving a way to self-reliance.
- v) Expand tea plantations and improve necessary infrastructure that increases job opportunities for refugees and host communities; at least 30 percent of new job opportunities will target refugees.
- vi) Promote refugee youth empowerment through YouthConnekt or other initiatives aiming at socio economic transformation of youth. 100 percent of refugee youth, who meet the competitive criteria for Youth Connekt, will have access to this national innovative business-enterprise initiative and the best business ideas will be awarded based on available resources.

The energy, infrastructure and environment pledge commit to:

- iv) Undertake environmental protection and rehabilitation in refugee hosting areas.
- v) Build resilient refugee settlements that promote conscious land use and reduce adverse impacts on the environment.

- vi) Ensure sustainable use of natural resources by providing clean and renewable energy solutions in refugee and host community households, in order to discourage the use of firewood.

The protection and solutions pledge commit to:

- ii) Build an effective and efficient registration documentation system including birth and marriage registration and the recognition of the legal status of displaced persons and their families.

And the health pledge commits to:

- ii) Through joint efforts with UNHCR and other partners, necessary resources will be mobilized to include refugees in the national program for viral hepatitis infection treatment to ensure Hepatitis C virus (HCV) elimination by 2024 in Rwanda.

Urban cities of Kigali with all 3 districts of Nyarugenge, Kicukiro and Gasabo, Huye and Bugesera were included in order to have access to matching grant. The refugees’ population to be informed about the Jya Mbere matching grant through the awareness campaign on refugees right to work in their respective districts.

Procurement implementation progress

The tenders that have been published during this fiscal year 2020-2021, awarded and signed contracts and the tenders that are in progress in line with implementing partner as per the table below:

Types of procurement	Activity description	Status and comment	Contract amount FRW	Implementing Agency
Goods/ supplies	Supply of classroom equipment	The contract is signed on 13 th April,2021 and is under execution. Current status: The purchase order was issued to the supplier on 13 th April 2021. The implementation status is at 100%	51,778,409 Frw	GISAGARA District
	Supply of equipment for Mugombwa TVET	The contract is signed on 12 th February,2021 and is under execution Current status: The implementation status is at 100%	28,501,361 Frw	GISAGARA District
Works	Construction works of classrooms in Gisagara District	The contract is signed on 21/09/2020 and it is under execution. Current status: The implementation status is at 100%	924,867,359Frw	GISAGARA District

Types of procurement	Activity description	Status and comment	Contract amount FRW	Implementing Agency
	Execution works for construction of 70 classrooms funded by World Bank through MINEMA	The contract is signed on 24/06/2021 and it is under execution.	971,020,504	KIREHE District
	Construction works of classrooms with Latrines at Nyabicwamba (Lot 1)	The contract is signed on 26/07/2021 and it is under execution.	393,682,650 Frw	GATSIBO District
	Construction works of classrooms with Latrines at Nyarurambi, Nyarubuye and Gituza TVET	The contract is signed on 26/07/2021 and it is under execution.	362,830,827 Frw	
	Construction works of classrooms with Latrines at Karubungo and Mukarange	The contract is signed on 26/07/2021 and it is under execution.	224,952,720 Frw	
Consultancy services	Supervision for classrooms construction works in Gisagara District	Signed Contract on 28/09/2020 and it is under execution. Current status: The implementation status is at 100%	25,370,000 Frw	MINEMA
	Hiring consultancy firm to conduct full feasibility study of classrooms construction	The contract is signed on 01/09/2020 and it is under execution. Current status: The implementation status is at 100%	23,800,000 Frw	GATSIBO District
	Hiring consultancy firm to conduct full feasibility study of upgrading Gituza TVET	The contract is signed on 27/08/2020 and it is under execution. Current status: The implementation status is at 100 %	8,000,000Frw	GATSIBO District
	Hiring consultancy firm to conduct full feasibility study Feasibility study for construction of Mugeru Modern Market	The contract is signed on 04/12/2020 and it is under execution. Current status: The implementation status is at 98%	7,982,700 Frw	GATSIBO District
	Consultancy service for feasibility study of construction of 70 new classrooms in different Sectors of Kirehe District.	The contract is signed on 19 th September, 2020 and it is under execution. Current status: The implementation status is at 100%	12,100,000 Frw	KIREHE District
	Hiring a consultancy firm for feasibility study of classrooms construction in Nyamagabe District	The contract is signed on 21 st August, 2020 and it is under execution. Current status: The implementation status is at 100%	40,000,000 Frw	NYAMAGABE District

Types of procurement	Activity description	Status and comment	Contract amount FRW	Implementing Agency
	FS for roads upgrade	The contract is under implementation. Current status: The contract is approved and signed on 6th May, 2021 . The implementation status is at 10% completed	266,444,670 Frw	MINEMA
	FS for ravines rehabilitation	The contract is under implementation. Current status: The contract is approved and signed on 27th April, 2021 . The implementation status is at 10% completed	287,529,520 Frw equivalent to the ceiling of 303,830 USD	MINEMA
	Hiring a consultancy firm to conduct Jya Mbere project baseline survey	The contract is under implementation and signed on 18/01/2021. Current status: The contract is approved and signed on 18 th January, 2021. The implementation status is at 70% completed,	32,076,400 Frw	MINEMA
	Feasibility study of construction works of Mubuga TVET in Karongi District	The contract is signed on 23 rd December, 2020 and it is under execution. Current status: The implementation status is at 60%, the draft report is under review.	15,000,000 Frw	Karongi District
	Hiring consultancy firm to undertake feasibility study for upgrading Kirehe District hospital construction works in Kirehe District.	The contract is signed on 17 th December, 2020 and it is under execution. Current status: The implementation status is at 50%, under review of first draft report The implementation status is at 50%	16,000,000 Frw	Kirehe District
	Hiring a consultancy firm for feasibility study of classrooms construction in Gicumbi District.	The contract is signed on 27 th October, 2020 and it is under execution. Current status: The implementation status is at 100%	15,500,000 Frw	Gicumbi District

Types of procurement	Activity description	Status and comment	Contract amount FRW	Implementing Agency
	Hiring a consultancy firm to conduct the feasibility study, detailed technical design, prepare ESIA for Kageyo selling point in Gicumbi District.	The contract is signed on 28 th January,2021 and it is under execution. Current status: The implementation status is at 80%	5,200,000Frw	Gicumbi District
	Hiring a consultancy firm for Conduct Study for construction of RYARUBONDO Market in NYAMAGABE District	The contract is signed on 16 th December, 2020 and it is under execution. Current status: The implementation status is at 90%	9,912,000 Frw	Nyamagabe District
	Hiring a consultancy firm for feasibility Study of construction of BUGARAMA Heath Center	The contract is signed on 16 th December, 2020 and it is under execution. Current status: The implementation status is at 85%	11,800,000 Frw	Nyamagabe District
	Feasibility study for upgrading Musha Market	The contract is signed on 30 th December, 2020 and it is under execution. Current status: The implementation status is at 90%	15,000,000 Frw	Gisagara District
	Hiring individual consultant to conduct environmental and social audit for water supply system in Karongi District	The contract is signed on 26 th April, 2021 and it is under execution. Current status: The implementation status is under inception preparation.	9,980,000 Frw	Karongi District
	Hiring a supervising firm for construction works of classrooms in Kirehe District Contract	The contract is signed on 28 th June, 2021 and it is under execution.	21,241,356 Frw	MINEMA

V. Agreed Actions from the 2nd Implementation Support Mission (October 5-9, 2020)

#	Actions	Responsible	Due date	Implementation progress as of June 30,2021
1	Share draft restructuring and additional financing proposal	MINEMA	Nov. 16	Done
2	Convene with UNHCR, WFP, UNDP and other partners to discuss the COVID-19 impacts and complete the Strategy Note	MINEMA	Nov. 25	Done
3	Review the existing DIAs between MINEMA and Kirehe and Karongi Districts	MINEMA, RTDA, WB	Nov. 30	Not yet
4	Complete recruitment of grants officer	BRD	Dec. 11	Not yet
5	Complete signature of contract for capacity needs assessment	BRD	Nov. 13	Done
6	Complete signature of agreements with two PFIs	BRD	Nov. 30	Five (5) Financing institutions signed financing agreement (AEC, BPR, UMUTANGUHA FINANCE Ltd, KCB and BK)
7	Hold joint planning meeting and agreed on division of labor between MINEMA and BRD	MINEMA, BRD	Nov. 20	Done
8	MINEMA and BRD to recommence regular coordination meeting;	MINEMA, BRD	As soon as possible	Done (Bimonthly meetings ongoing)
9	Review simplified agreement between BRD and PFIs	WB	As soon as possible	Done
10	Complete proposal evaluation and contract signing of ravine rehabilitation feasibility study	MINEMA	Nov. 30	Done
11	Complete inception report of feasibility study (ravines rehabilitation)	MINEMA	Dec. 31	Not yet
12	Ensure close follow-up on the baseline survey contract and explore opportunities to expedite the process	MINEMA	Ongoing until completion	Done (ongoing follow up)
13	Advise on the selected method for server hosting	MINEMA	Nov. 15	Done
14	Post project reports on official website	MINEMA	Nov. 15	Done
15	Share draft Quarterly Progress Report covering the second quarter of FY 2020-2021 for WB review and clearance in accordance with the PIM	MINEMA	Jan. 29 2021	Done
16	Secure external technical assistance to support preparation of specifications and ToRs and	MINEMA	Ongoing	Done (Different institutions have been engaged including

#	Actions	Responsible	Due date	Implementation progress as of June 30,2021
	subsequent evaluation of proposals and bids			Districts, RTDA, BRD, WASAC etc./ongoing)
17	Setup a virtual experience sharing workshop for MINEMA on MINEDUC's ongoing school construction	WB, MINEMA	Nov. 15	Done
18	Establish GRCs promptly in Districts which have finalized preparatory activities to commence civil works	MINEMA	As soon as possible	Done (6 GRCs established in Gisagara)
19	Submit site specific safeguards instruments for subprojects to the WB for comments	MINEMA	Ongoing	Ongoing activity
20	Submit safeguards implementation progress report quarterly starting from Jan. 2021	MINEMA	Starting in Jan. 2021	Done

IV. Key Challenges and way forward

Table 26: Challenges and way forward

#	Challenges	Way forward	Due dates/Period
1	Delay in review of Feasibility study report, as well as safeguards documents.	Request support to the WB consultant in review of safeguards document.	April 23,2021. The supported was provided and most of the reports were cleared
2	In order to mitigate the spread of COVID-19, activities were slowed and that resulted into delay of implementation for some activities including reducing number of staffs in the office and construction sites, supplies, holding face to face meeting/campaigns on refugees right to work/field works due to Covid 19	Extending delivery periods and working remotely and resuming activities whenever conditions will allow	Ongoing
3	Failure of tenders due to lack of qualified bidders	Reviewing ToRs, RFPs and re-advertising failed tenders	Ongoing (as soon as evaluation is completed)
4	Delay of recruiting the Grant Officers	The issue to be escalated to the top management so as to take the decision of allowing head hunting	Ongoing

V. Planned Activities for the next implementation period

Table 27: Planned activities for next implementation period

SN	Component	Key activity	Due dates	Responsible
1	Component one: Access to basic services and socio-economic investments	Hire contractor for classroom construction in Gicumbi District	August 31, 2021	Gicumbi District
2		Hire consultancy firm for supervision of classrooms in Gicumbi district	Sept 30,2021	MINEMA
3		Construction works at 25 % in Kirehe, 20% in Gatsibo and 10% in Nyamagabe	Sept 30,2021	Kirehe, Gatsibo and Nyamagabe
4		Feasibility Study of TVETs construction/upgrade completed in Nyamagabe, Gicumbi, Karongi	Sept 30,2021	Gicumbi, Nyamagabe and Karongi
5		Construction works at 20% for TVET upgrade in Gatsibo district	Sept 30,2021	Gatsibo
6		Contractor and supervision firm hired to construct Musaza TVET	Sept 30,2021	Kirehe and MINEMA
7		feasibility study report for RUVUNE Health center reviewed and approved in Gicumbi district.	Sept 30,2021	Gicumbi
8		feasibility study re for upgrade of Kirehe District Hospital and Nyamagabe Health center completed	Sept 30,2021	Kirehe, Nyamagebe, MINEMA
9		Reviewed and approved interim feasibility study report and preliminary design	Sept 30,2021	MINEMA
10		Finalize ToR and initiate tenders for feasibility studies for markets construction/ upgrade.	Sept 30,2021	Gisagara, Gatsibo, Gicumbi and Nyamagabe
	Component Two:			
11	Economic opportunity	Recruitment of grant officers	Sept 30,2021	BRD
12		Engage PFIs and sign with them a Subsidiary Financing Agreement	Ongoing	BRD
13		Signing Subsidiary Financing Agreements and Disbursements to engaged PFIs	Ongoing	MINEMA & BRD
14		Developing PPT and FAQs	Sept 30, 2021	MINEMA & BRD
15		Awareness activities	Sept 15, 2021	MINEMA & BRD
16	Component three: Environmental Management	Validation of inception report of Feasibility study for ravine/gully rehabilitation initiated	August 11, 2021	MINEMA
17	Component four:			
18	Project Management/ME	Submission of the final report of the baseline survey	Sept 15,2021	
19		Review/Consultation, feedback collection, refining of the report including feedback from WB and NISR	Sept 30,2021	

SN	Component	Key activity	Due dates	Responsible
20		Updating PIM, MGM, PPSD, SEP, GRM, Development of a plan for establishing and training of GRCs, DIA	August 30,2021	MINEMA
21		Establishment of GRCs for construction of classrooms in Kirehe,	July 23, 2021	MINEMA
22		Establishment of GRCs for construction of classrooms Gatsibo and Nyamagabe District	August 18, 2021	MINEMA
23		Training of established GRCs	TDB upon lifting of measures to prevent covid 19	MINEMA

Annex 1. Summary of stakeholder Engagement Activities

SN	Meeting objective	Outcomes	Dates	Participating institutions
1.	Coordination meeting with DFS/implementation progress	Presented progress and highlighted areas of improvement	Oct 2, 2020	MINEMA and District DFSs
2.	Kick off meeting for supervision services for classrooms construction in Gisagara district	Initiation of supervision services for classrooms construction and discussion of requirement for delivering	Oct 6, 2020	MINEMA; UNITED CONTRACTORS; Gisagara District;
3.	Review of draft report feasibility for feasibility of classrooms constructions / GITUZA TVET upgrade in Gatsibo district.	Draft of ESIA/FS report reviewed	Oct 12, 2020	Gatsibo District; NOCTA ENGINEERING; KHC Ltd; MINEMA
4.	Site meeting on 40 classrooms construction works in Gisagara District	Discussion on progress of construction sites	Oct 12, 2020	MINEMA; UNITED CONTRACTORS; Gisagara District; ECOMEM Ltd
5.	Review of final draft report for feasibility study for classrooms construction in Nyamagabe district	Final Draft of ESIA/FS report reviewed	Oct 28, 2020	Nyamagabe District; IMCE Ltd; MINEMA
6.	Engagement of Rwanda Polytechnic on TVET Construction under Jya Mbere Project.	Establishment of technical team for identification of programs, options and equipment for TVETs to be constructed, upgraded and equipped	Oct 29,2020	MINEMA and RP
7.	Review of final draft report feasibility for feasibility of classrooms constructions / GITUZA TVET upgrade in Gatsibo district.	Final Draft of ESIA/FS report reviewed	November 11, 2020	Gatsibo District; NOCTA ENGINEERING; KHC Ltd; MINEMA
8.	Negotiation meeting with firm to conduct FS for ravine rehabilitation and construction of water reservoir		Nov 16,2020	MINEMA and HYCOGEC CONSULTANT LTD

SN	Meeting objective	Outcomes	Dates	Participating institutions
9.	Joint Planning for task sharing and Coordination.	Agreed the key tasks required to implement the component successfully.	Nov 17, 2020	MINEMA, BRD
10.	Safeguards implementation progress	Sharing draft safeguards instruments with WB for simultaneous review	Nov 27, 2020	MINEMA and WB
11.	Site meeting on the progress of classrooms construction works in Gisagara District	Discussion on progress of construction sites	Nov 19, 2020	MINEMA; UNITED CONTRACTORS; Gisagara District; ECOMEM Ltd.
12.	Closing meeting of negotiations with first ranked bidder to conduct FS for ravine rehabilitation and construction of water reservoir	Have local firm to be registered as JV lead company and Provide supporting document for replacing three key staff who didn't meet minimum required qualification	Dec 8, 2020	MINEMA and HYCOGEC CONSULTANT LTD
13.	Coordination meeting/To have coordinate projects' plans for upcoming activities component two	Agreed to speed up the activities of Quarter 2 of 2020/2021	Dec 9, 2020	MINEMA, BRD
14.	Coordination meeting/ To have common understanding on BRD's Disbursement Request	MINEMA to reply to the disbursement request	Dec 14, 2020	MINEMA, BRD
15.	Negotiation meeting with firm to conduct project baseline survey	Agreed on terms of negotiations and requested firm to submit CVs for data collectors	December 14, 2020	MINEMA and Consultancy and Innovation Business Action (CIBA) Ltd
16.	Coordination meeting/implementation progress	Presented progress and highlighted areas of improvement	Dec 22, 2020	MINEMA and District (DFS)
17.	Discussion on progress of construction sites	Discussion on progress of construction sites	January 10, 2020	MINEMA; UNITED CONTRACTORS and Gisagara District
18.	Technical meeting to discuss COVID-19 impacts in refugee settings and strategic interventions	Participants committed to provide their inputs on the aforesaid draft documents particularly on COVID19 impacts and proposed to include urban refugees in scope of the project as beneficiaries of component two given that they have been mainly affected by COVID19	Jan 13, 2021	MINEMA, UNDP, UNHCR and WFP
19.	Finalize subsidiary agreement between MINEMA and BRD	Final comments and inputs were provided	Feb 16, 2021	MINEMA and BRD
20.	Discuss on ways of disseminating message for the sensitization of Refugees on Jya Mbere Project	Have a meeting with executive committees of the refugees and use of pre-recorded sounds	Feb 17, 2021	MINEMA, District DFSs and Camp Management
21.	Coordination meeting/implementation progress	Presented progress and highlighted areas of improvement	Feb 18, 2021	MINEMA and District (DFS)
22.	Coordination meeting/implementation progress	Presented progress and highlighted areas of improvement	March 11, 2021	MINEMA and District (DFS)

SN	Meeting objective	Outcomes	Dates	Participating institutions
23.	Review of inception note of baseline study	Report revised	March 19,2021	MINEMA and District (DFS)

Annex 2: Summary of progress against the results framework

Project Development Objective Indicators

Indicator Name	Baseline	End Target	PROGRESS TO DATE
Improve access to basic services and economic opportunities			
Beneficiaries with improved access to social and economic infrastructure and services (Number)	0.00	325,919.00	During this reporting period, 97,709 beneficiaries were improved with improved access to social-economic infrastructure and services through classrooms constructed in Gisagara District as well as Schools desks and medical equipment provided to Gatsibo District Gatsibo: 78,176 beneficiaries Gisagara: 19,533 beneficiaries
Refugees (Percentage)	0.00	20.00	3%
Host community members (Percentage)	0.00	80.00	97%
Beneficiaries of economic opportunity activities that report an increase in income (Number)	0.00	9,900.00	0 (no survey conducted yet)
Refugees (Percentage)	0.00	20.00	0
Host community members (Percentage)	0.00	80.00	0
Female (Percentage)	0.00	50.00	0
Direct project beneficiaries (Number)	0.00	334,919.00	630
Female (Percentage)	0.00	50.00	283
Support environmental management for refugees and host communities			
People provided with improved environmental conditions in refugee hosting districts (Number)	0.00	30,000.00	0

Intermediate Results Indicators by Component

Indicator Name	Baseline	End Target	PROGRESS Y1
Component 1: Access to Basic Services and Socio-economic Investments			
Climate-resilient Infrastructure subprojects completed in refugee-hosting districts (Number)	0.00	264.00	In this reporting period, 40 climate-resilient infrastructure subprojects were completed.
Beneficiaries participating in project planning activities (Number)	0.00	10,000.00	7,906 beneficiaries (from Karongi, Gisagara, Nyamagabe, Kirehe, Gatsibo, and Gicumbi Districts) participated in project planning.
Refugees (Percentage)	0.00	20.00	4,12 % of Refugees from the refugee camps including: KIZIBA, MUGOMBWA, KIGEME, MAHAMA, NYABIHEKE and GIHEMBE refugee camps had participated in the planning of JYA MBERE sub-project activities.
Host community members (Percentage)	0.00	80.00	35,88 % of host community from the District hosting refugee camps including: KARONGI, GISAGARA, NYAMAGABE, KIREHE, GATSIBO and GICUMBI Districts had participated in the planning of JYA MBERE sub-project activities.
Female (Percentage)	0.00	50.00	41,76% of female both from the host community and refugee camps, had participated in the planning of JYA MBERE sub-project activities.
Roads rehabilitated or upgraded (Kilometers)	0.00	110	-
Component 2: Economic Opportunity			
People employed by cooperatives and MSMEs receiving financing support through the project (Number)	0.00	8,800.00	To date; 630 beneficiaries have been provided matching grants; including: 129 from Gatsibo; 65 from Gicumbi, 101 from Karongi, 105 from Nyamagabe and 118 from Gisagara Districts as well as 112 from Kirehe District

Refugees (Percentage)	0.00	20.00	To date; 55% of 630 people who have been provided with matching grant are refugees
Host community members (Percentage)	0.00	80.00	To date; 45% of 630 people who have been provided with matching grant are host community
Female (Percentage)	0.00	50.00	To date; 45% of 630 people who have been provided with matching grant are female
Beneficiaries of capacity building activities under component two (Number)	0.00	1,000.00	0
Female (Percentage)	0.00	50.00	0
Component 3: Environmental Management			
Beneficiaries using surface reservoir water for productive use (Number)	0.00	10,000.00	0
Ravines rehabilitated (Number)	0.00	6.00	
Surface water reservoirs constructed (Number)	0.00	12.00	0
Component 4: Project Management/M&E			
P-MIS providing necessary information to measure project effectiveness and results (Yes/No)	No	Yes	The P-MIS has been developed, deployed at the National Data Center, Tested and Training of the users have been conducted. The system is now operational
Beneficiaries that feel project investments reflected their needs (Percentage)	0.00	75.00	0 (No survey conducted yet)

'~Grievances registered related to delivery of project benefits that are addressed (Percentage)	0.00	90.00	73,68 % (14 out of 19 reported complaints)
Increase in social cohesion among project beneficiaries (Percentage)	0.00	5.00	0

Prepared by:

Reviewed by (1):

Reviewed by (2):

Approved by:

UWIMANA Jeannette
Social Safeguards Specialist

FURAHA William
Program Manager

INGABIRE Veneranda
SPIU Coordinator

KAYUMBA Olivier
Permanent Secretary